

UNIVERSITY OF TORONTO

St. George Campus (UTSG)

ISO 50001: Energy Awareness Module



UNIVERSITY OF
TORONTO

DEFY
GRAVITY

IN THIS MODULE

You will learn about

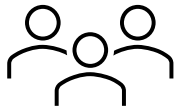
- Our Energy Policy
- Energy Management System (EnMS) & 50001 Ready
- Energy use at our campus
- Our 'Climate Positive' target
- Who has a role in the energy management system?
- How can you contribute?



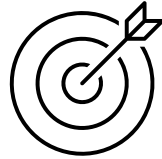
ENERGY POLICY

The University of Toronto is committed to a structured approach to energy management and to maintaining an Energy Management System compliant with ISO 50001

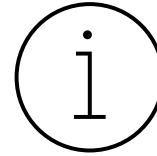
We are committed to continual energy performance improvement and will take the following steps to support this policy as part of its collective sustainability objectives:



Implement & maintain an **energy management team**



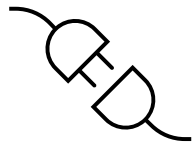
Set & achieve **objectives & targets**



Availability of **information and resources**



Develop our people to understand their **responsibilities**



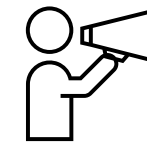
Consider energy performance **in the design & procurement**



Report the results to the St. George Campus **Leadership**



Comply with **legal and other requirements**



Communication & annual review of the policy



WORKING TOWARDS ISO 50001

Target 2024; Benefits

1. Reduce Energy Waste

Reduction of energy waste through better operating practices.

2. Systematic Energy Management

Improvement of the energy balance and reduction of greenhouse gas emissions.

3. Transparency

Clear and continuous communication between management and the whole organization.

4. Awareness

Raising awareness among all staff about reducing energy waste.

5. Supports Carbon Plan

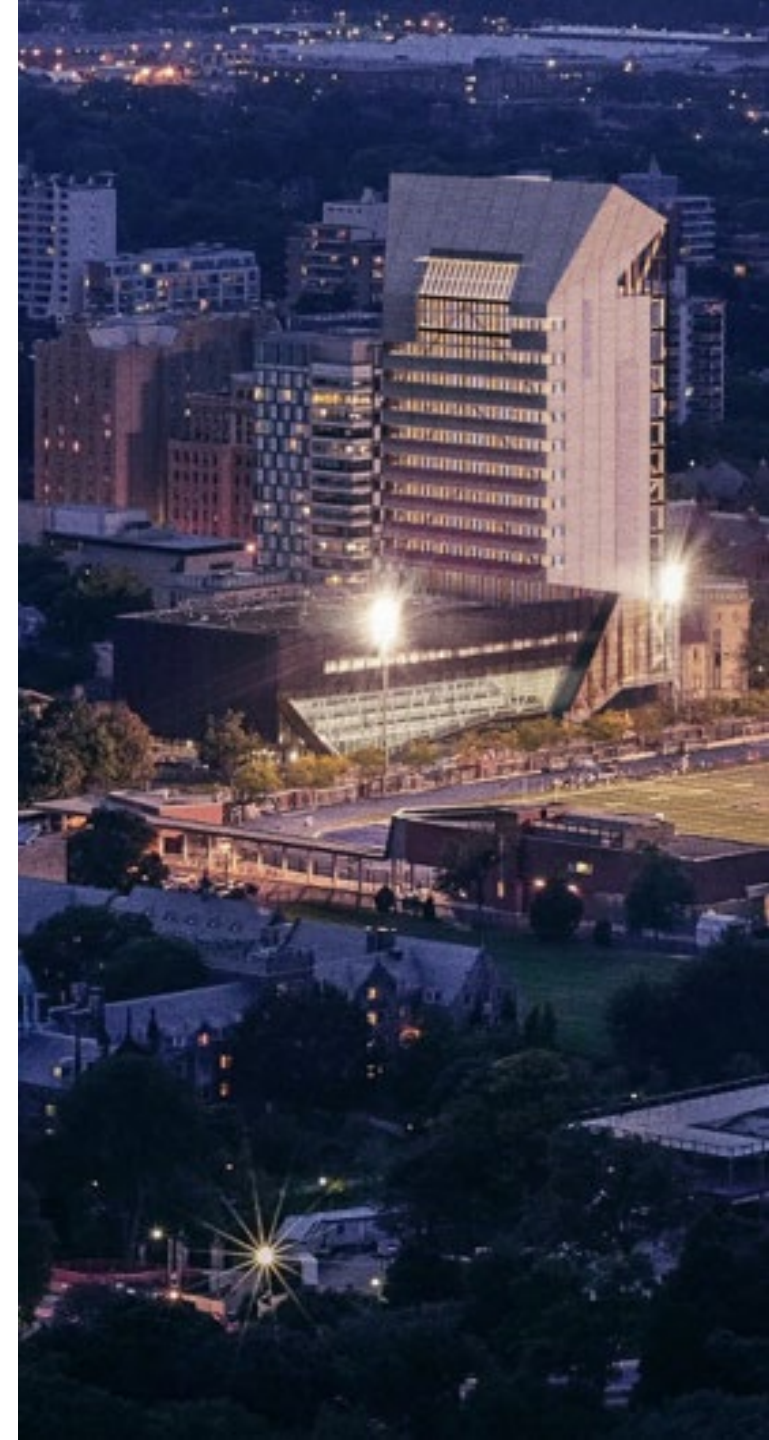
Reducing energy waste reduces carbon emissions

6. Structure

Unified structure of ISO 50001 facilitates the integration of an energy management system.



UNIVERSITY OF
TORONTO



KEEPING MOMENTUM

There are always opportunities...



Share your
energy
conservation
ideas with your
supervisor



Keep an eye out
for energy waste.



For more
information,
coordinate with
the Sustainability
Office.



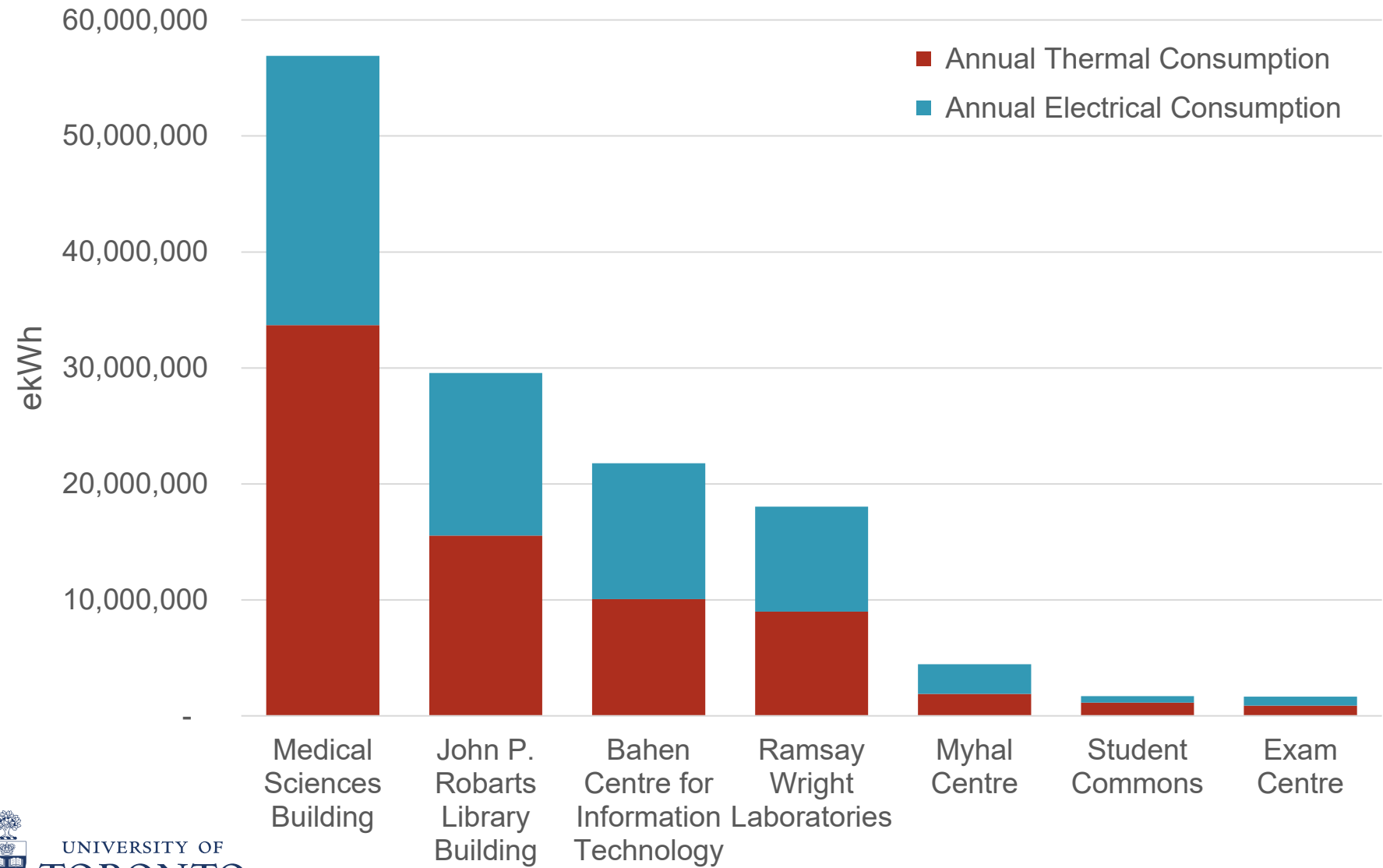
ISO 50001 ROLL-OUT

7 Campus Facilities

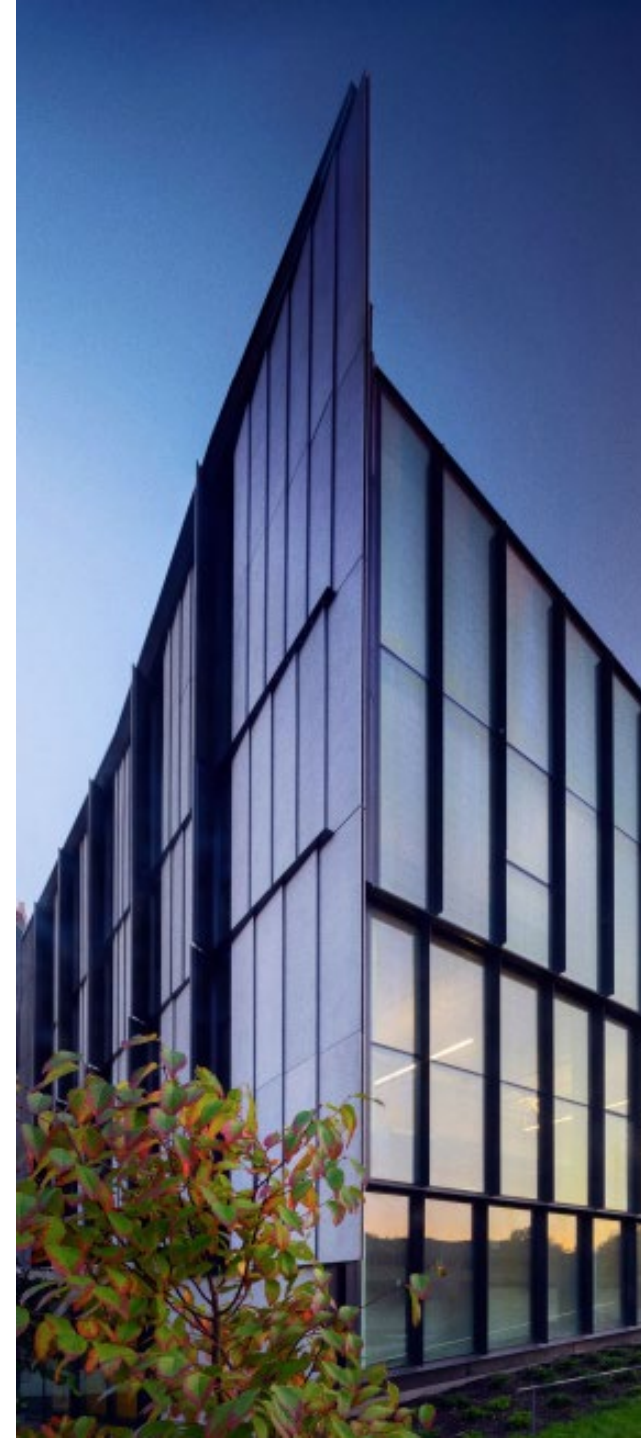
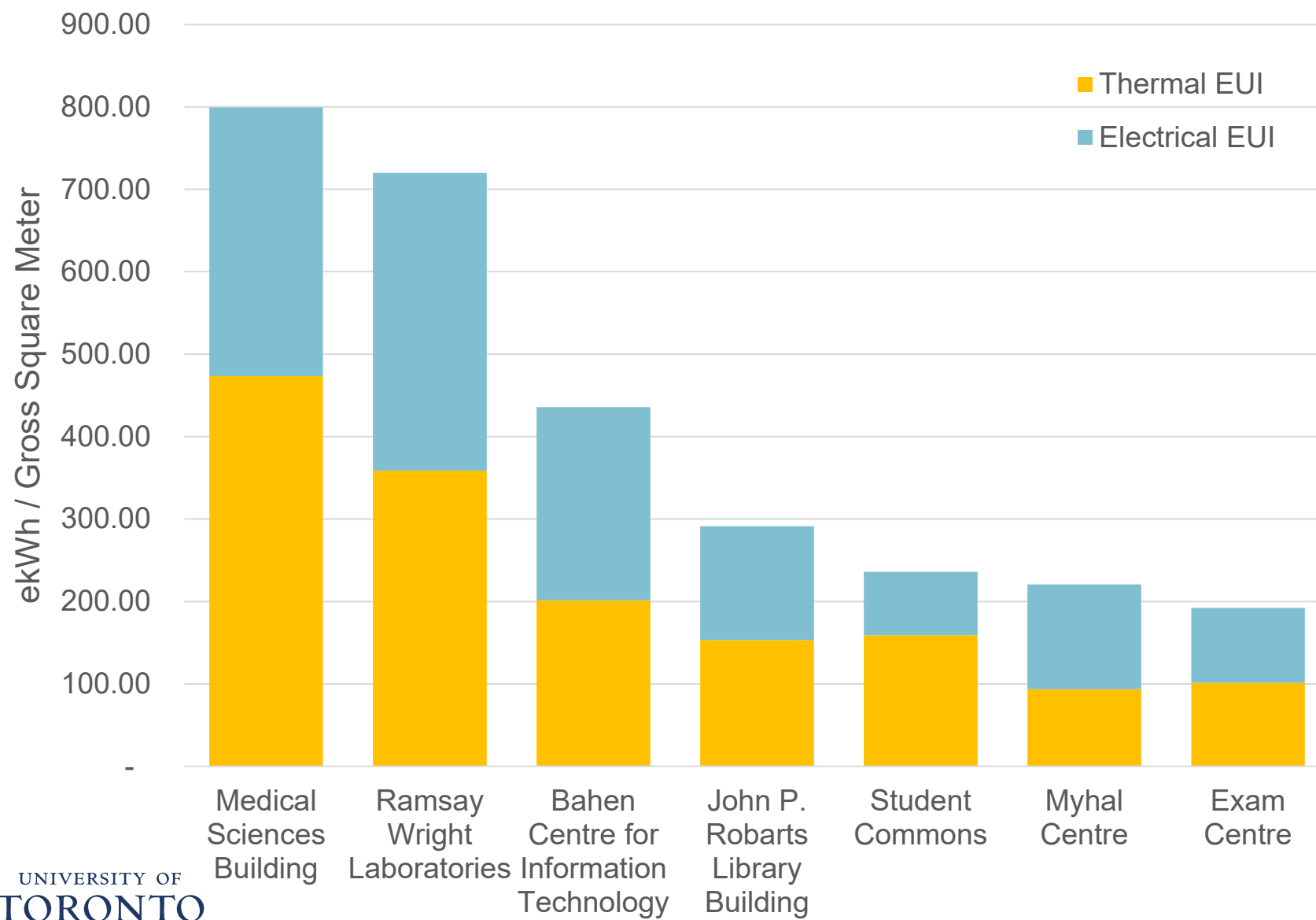
Roll-Out in select Buildings with advanced
BAS Controls



THERMAL & ELECTRICAL CONSUMPTION

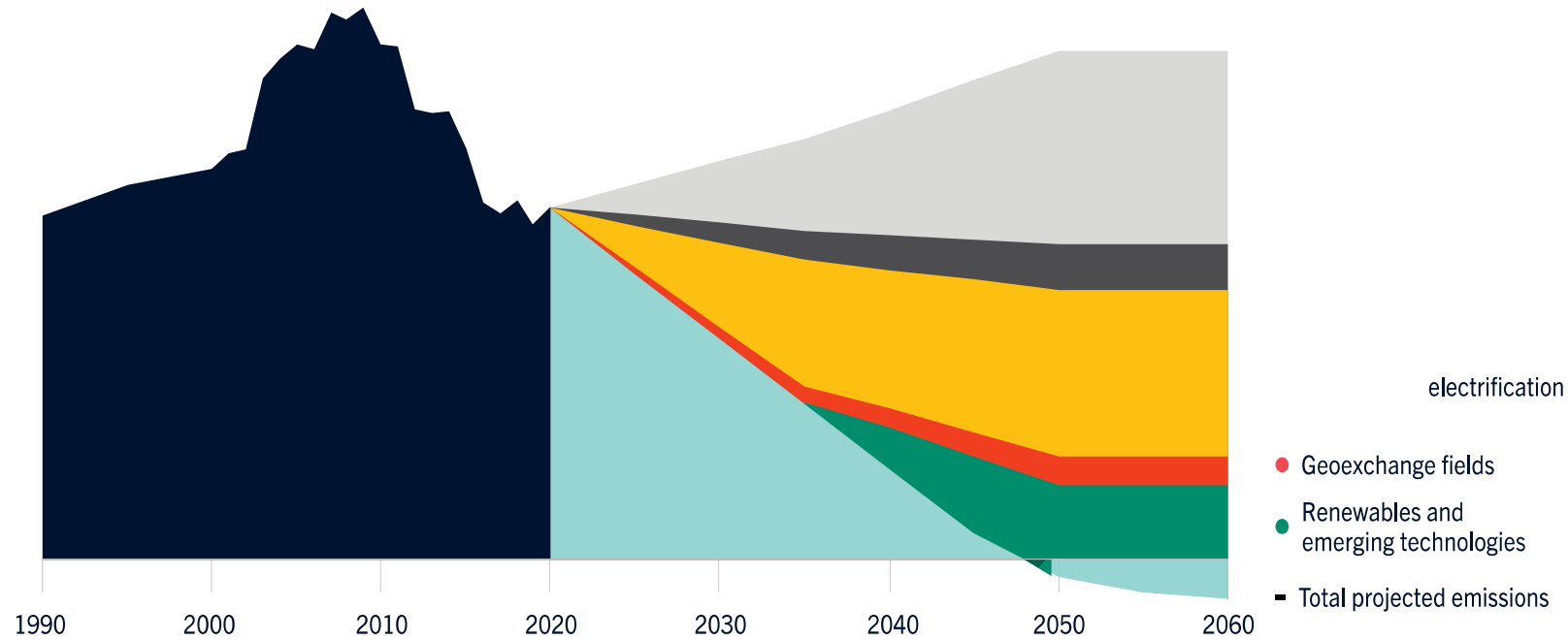


TOTAL ENERGY USE INTENSITY (EUI)



2050 CLIMATE POSITIVE TARGET

St. George Campus



WHO HAS A ROLE in energy management...



EVERYBODY!

